

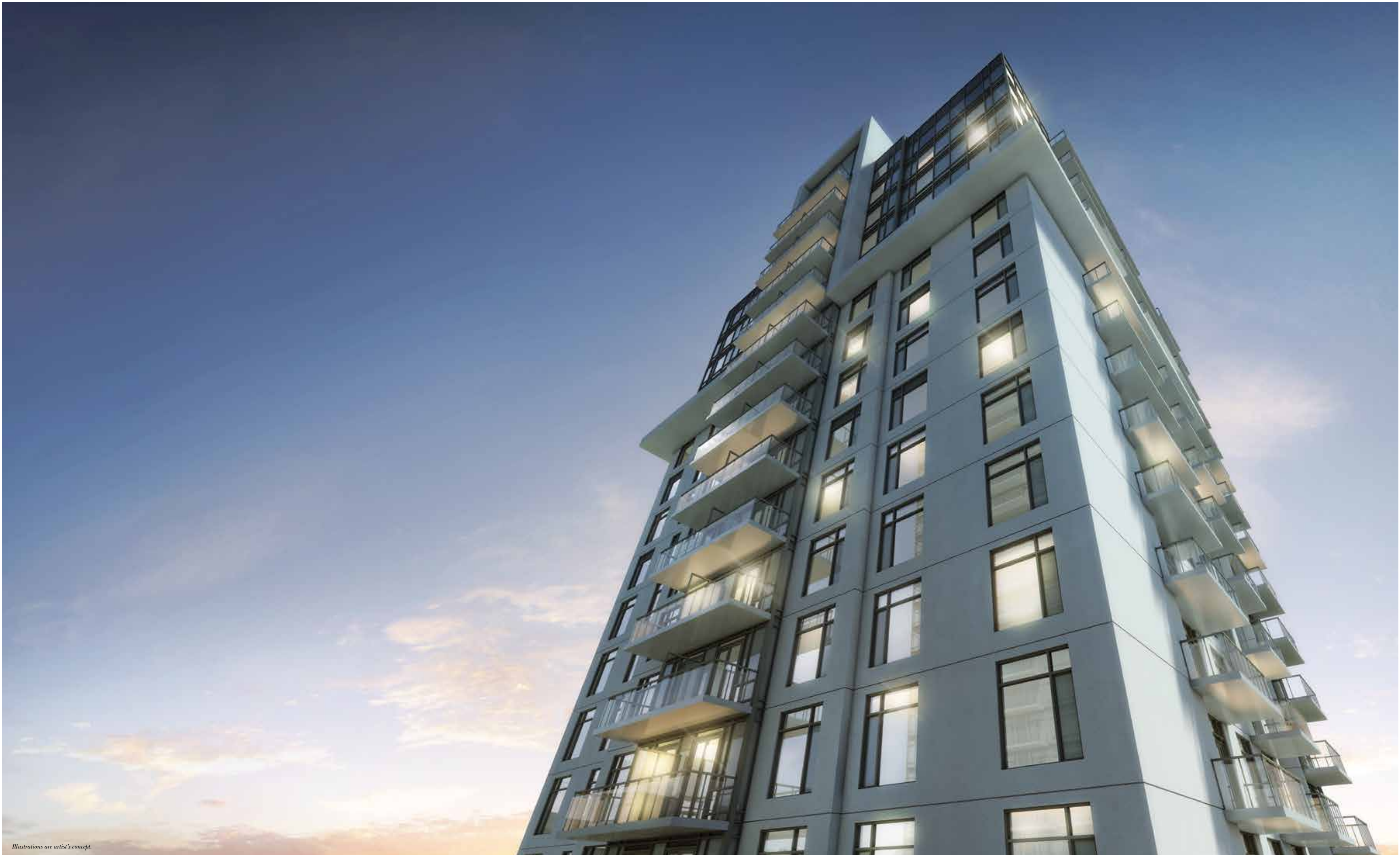
TRIDEL[®]
BUILT FOR LIFE

DORSAY[™]



PARFAIT[™] AT ATRIA





Illustrations are artist's concept.



Actual Model Suite Photography.



Actual Model Suite Photography.

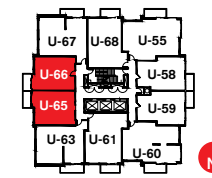
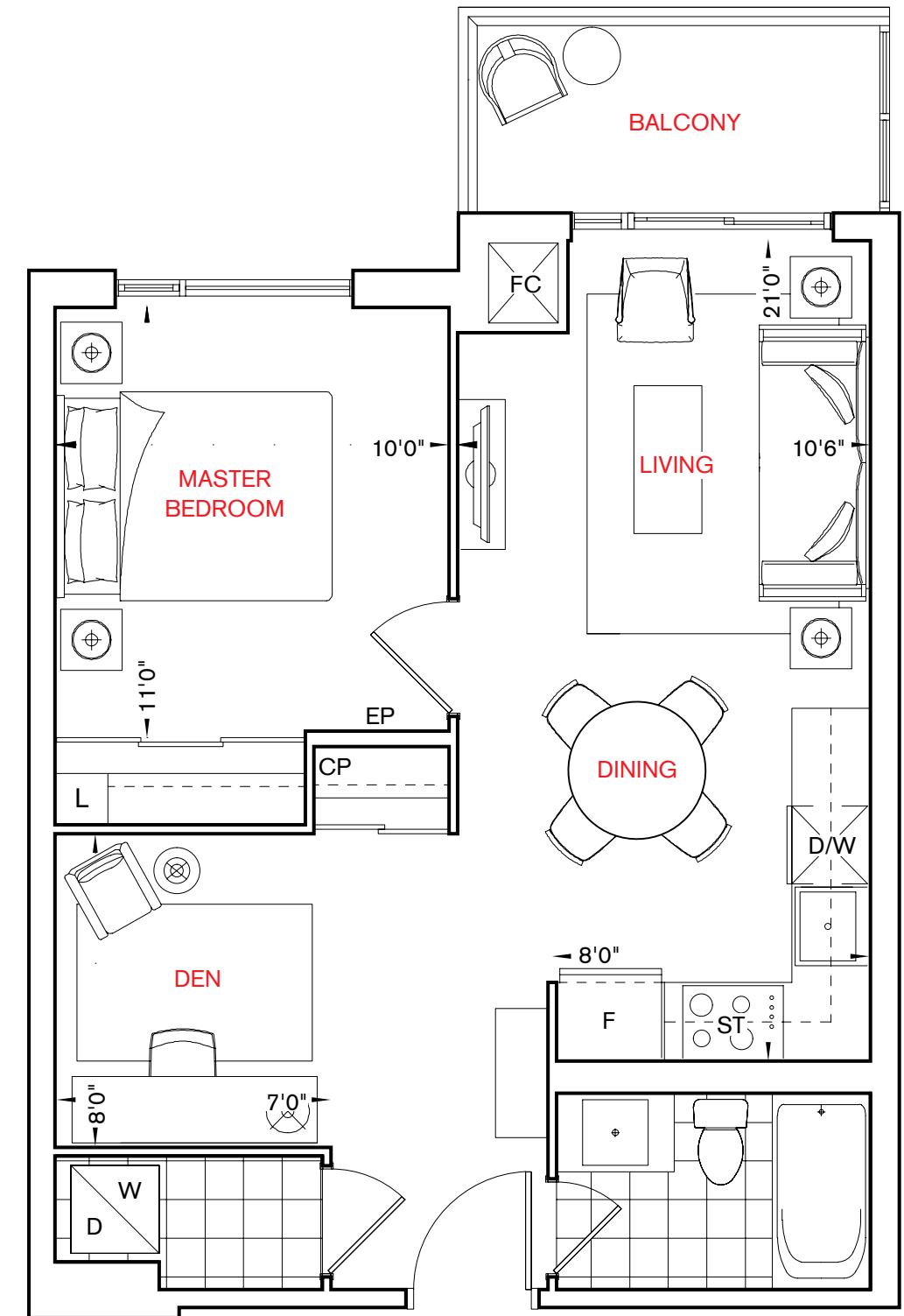
Decadent Den!



Dark Chocolate

1C + D / 1C + DR

1 bedroom + den



TYPICAL FLOOR

All dimensions are approximate and subject to normal construction variances. Dimensions may exceed the useable floor area. Sizes and specifications subject to change without notice. Furniture is displayed for illustration purposes only and does not necessarily reflect the electrical plan for the suite. Suites are sold unfurnished. ©Tridel 2016. ©Tridel and design. "D" design, Tridel Built for Life and design, Built Green. Built for Life and design are registered Trademarks of Tridel Corporation. Project names and logos are Trademarks of their respective owners. All rights reserved. E.&O.E. January 2016.

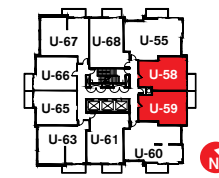
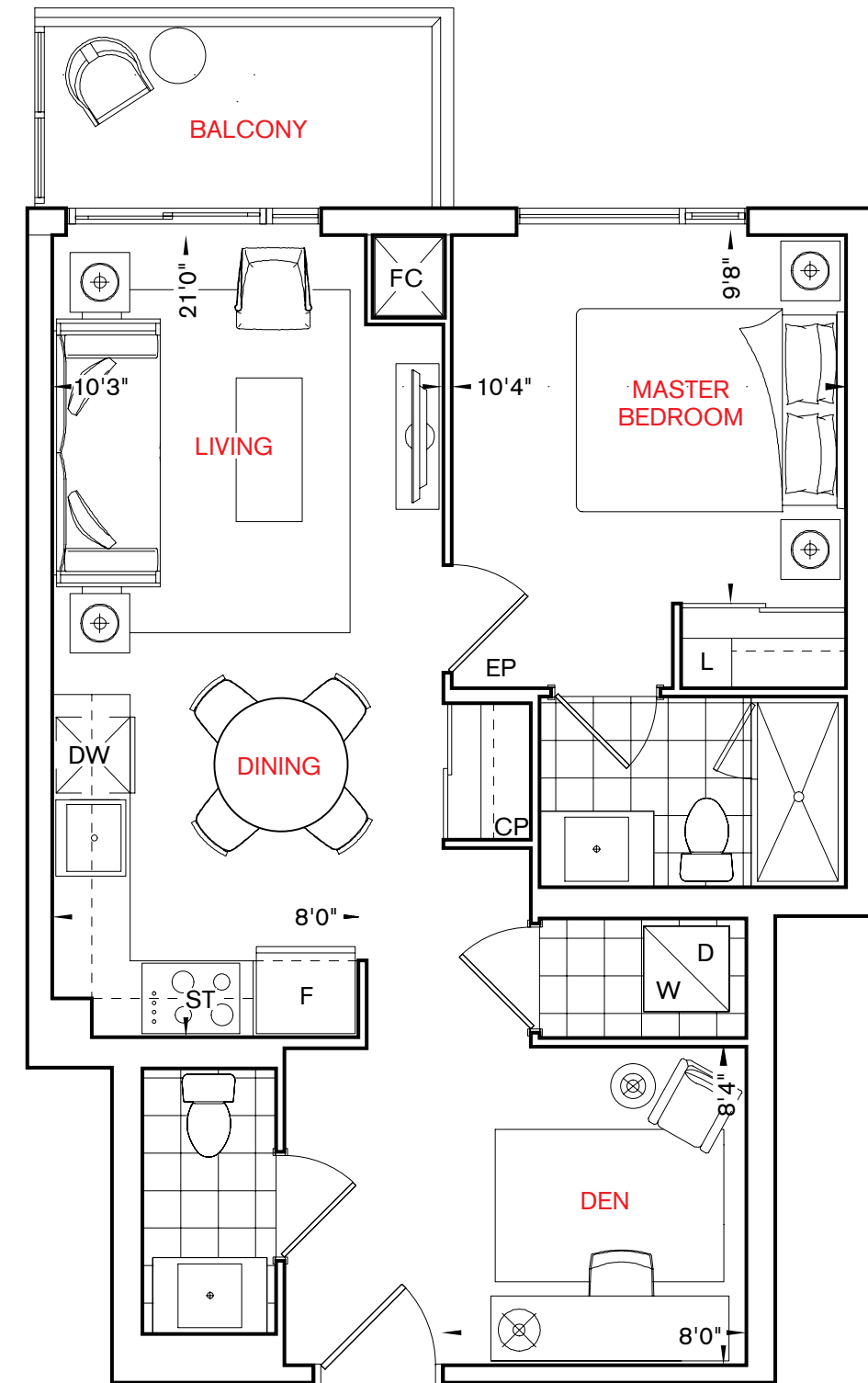
Scrumptious Ensuite!



Passion Fruit

1D + D / 1D + DR

1 bedroom + den



TYPICAL FLOOR

All dimensions are approximate and subject to normal construction variances. Dimensions may exceed the useable floor area. Sizes and specifications subject to change without notice. Furniture is displayed for illustration purposes only and does not necessarily reflect the electrical plan for the suite. Suites are sold unfurnished. ©Tridel 2016. ©Tridel and design, "D" design, Tridel Built for Life and design, Built Green. Built for Life and design are registered Trademarks of Tridel Corporation. Project names and logos are Trademarks of their respective owners. All rights reserved. E.&O.E. January 2016.

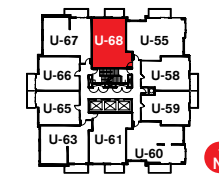
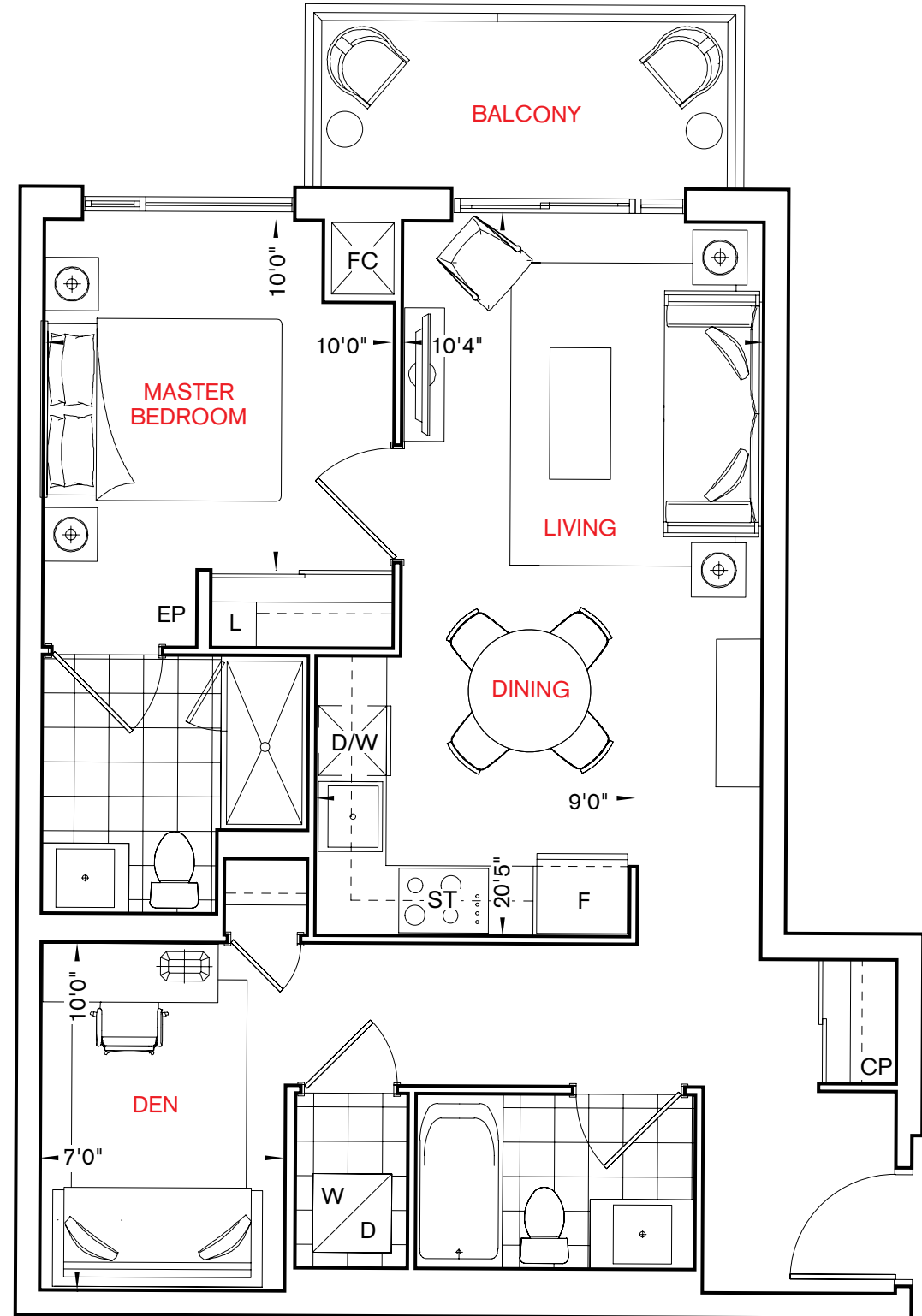
Private Den!



Trifle

1E + D

1 bedroom + den



TYPICAL FLOOR

All dimensions are approximate and subject to normal construction variances. Dimensions may exceed the useable floor area. Sizes and specifications subject to change without notice. Furniture is displayed for illustration purposes only and does not necessarily reflect the electrical plan for the suite. Suites are sold unfurnished. ©Tridel 2016. "D" design, Tridel Built for Life and design, Built Green. Built for Life and design are registered Trademarks of Tridel Corporation. Project names and logos are Trademarks of their respective owners. All rights reserved. E.&O.E. January 2016.

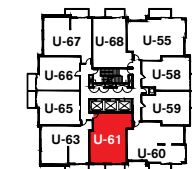
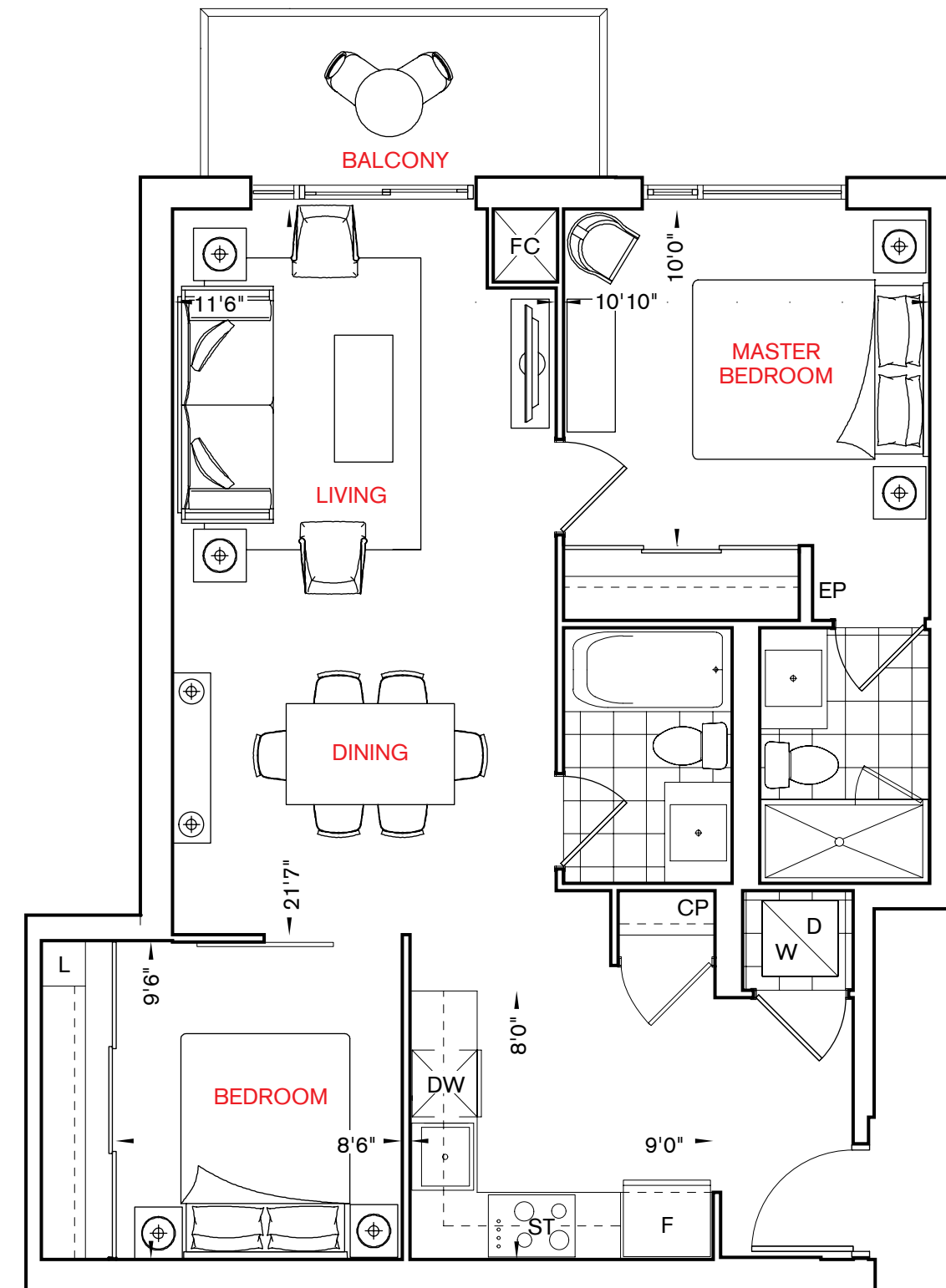
Delectable
Living and Dining!



Marshmallow

2A

1 bedroom + den



TYPICAL FLOOR

All dimensions are approximate and subject to normal construction variances. Dimensions may exceed the useable floor area. Sizes and specifications subject to change without notice. Furniture is displayed for illustration purposes only and does not necessarily reflect the electrical plan for the suite. Suites are sold unfurnished. ©Tridel 2016. ©Tridel and design, "D" design, Tridel Built for Life and design, Built Green. Built for Life and design are registered Trademarks of Tridel Corporation. Project names and logos are Trademarks of their respective owners. All rights reserved. E.&O.E. January 2016.

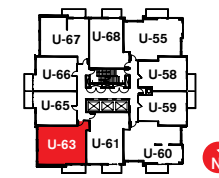
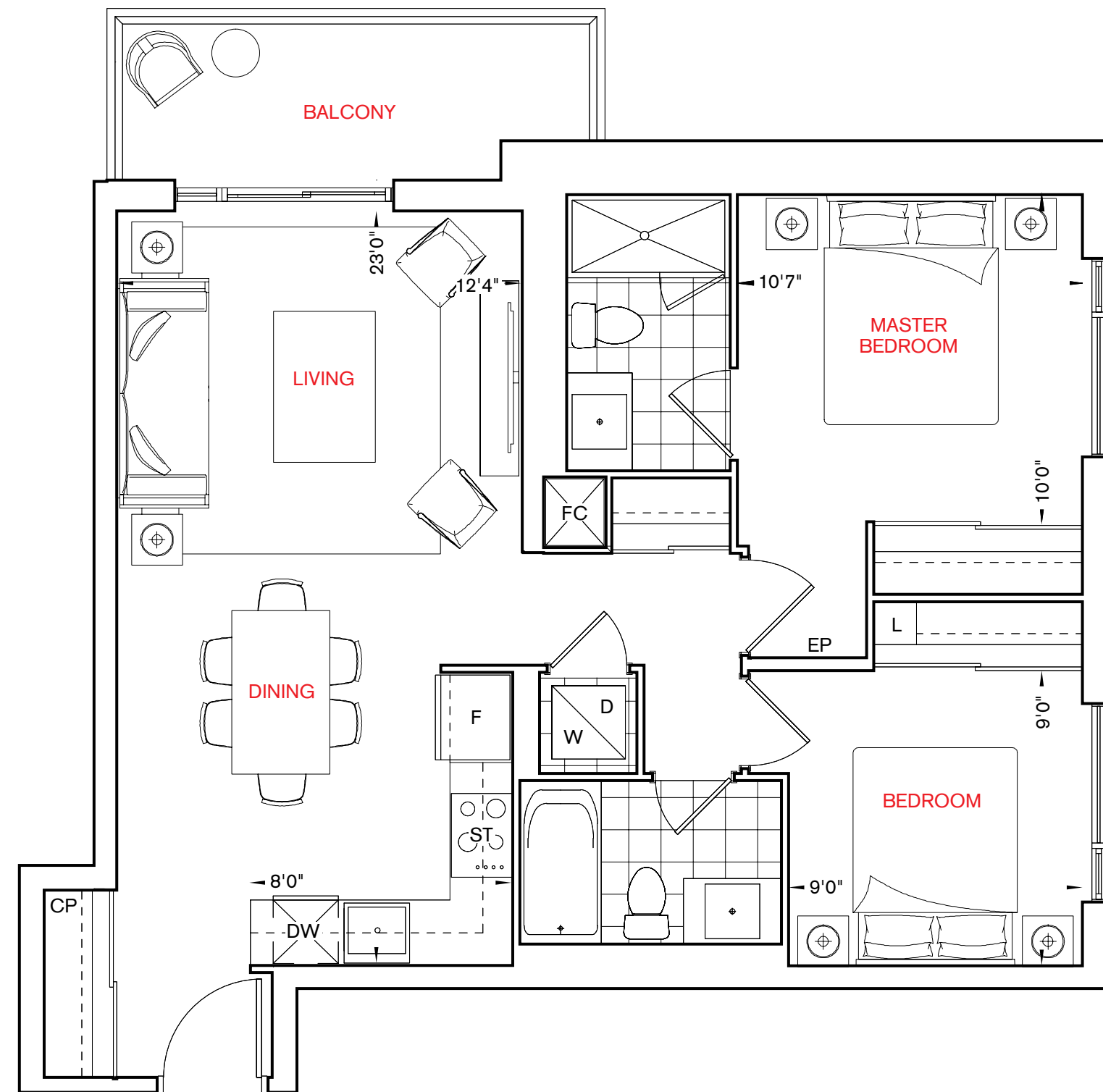
Luxurious
Open Living!



Caramel

2B

2 bedroom



TYPICAL FLOOR

All dimensions are approximate and subject to normal construction variances. Dimensions may exceed the useable floor area. Sizes and specifications subject to change without notice. Furniture is displayed for illustration purposes only and does not necessarily reflect the electrical plan for the suite. Suites are sold unfurnished. ©Tridel 2016. ©Tridel and design, "D" design, Tridel Built for Life and design, Built Green. Built for Life and design are registered Trademarks of Tridel Corporation. Project names and logos are Trademarks of their respective owners. All rights reserved. E.&O.E. January 2016.

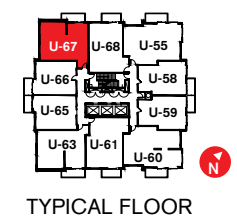
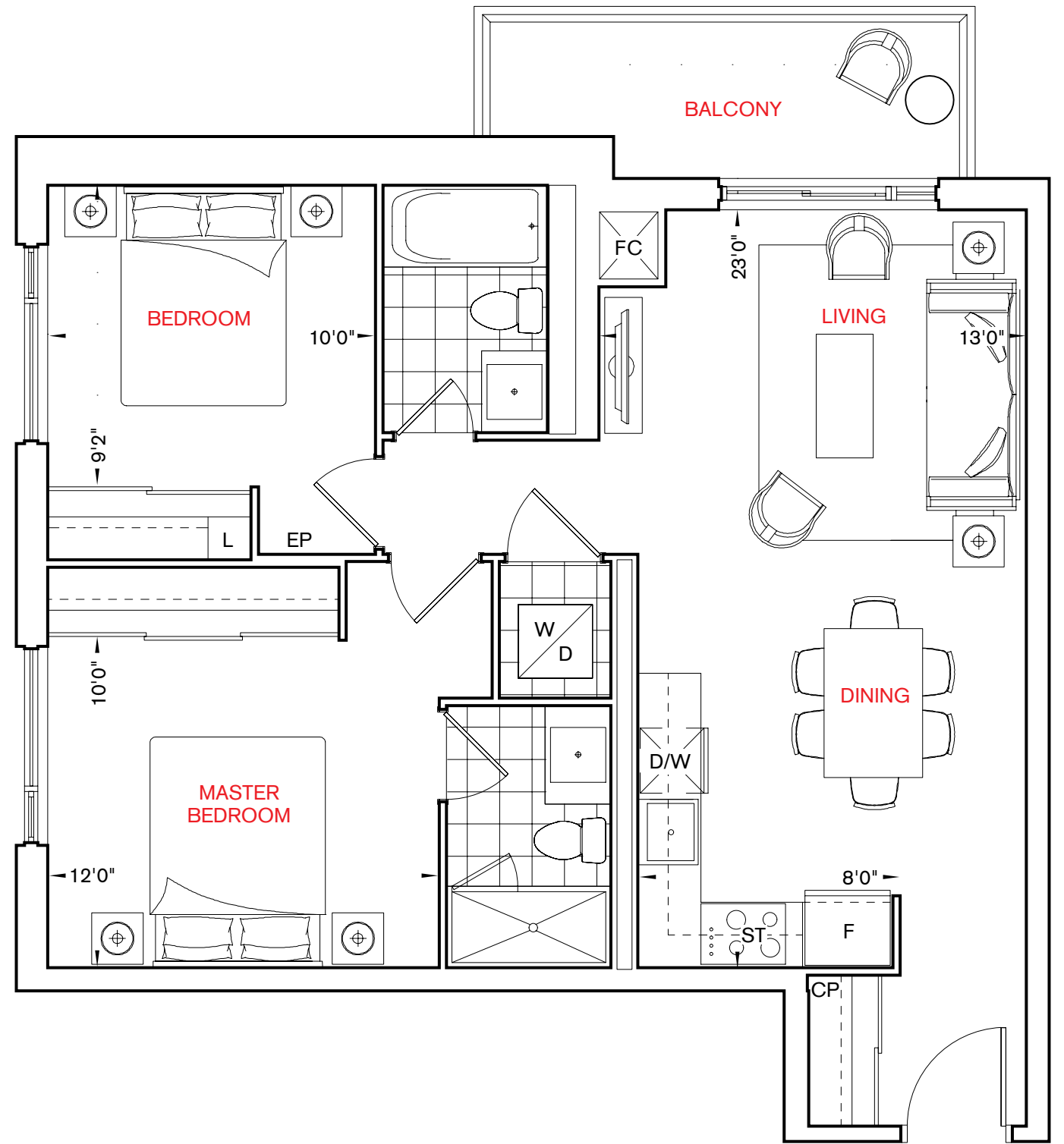
Generous Living
and Dining!



French Vanilla

2C

2 bedroom



TYPICAL FLOOR

All dimensions are approximate and subject to normal construction variances. Dimensions may exceed the useable floor area. Sizes and specifications subject to change without notice. Furniture is displayed for illustration purposes only and does not necessarily reflect the electrical plan for the suite. Suites are sold unfurnished. ©Tridel 2016. ©Tridel and design, "D" design, Tridel Built for Life and design, Built Green. Built for Life and design are registered Trademarks of Tridel Corporation. Project names and logos are Trademarks of their respective owners. All rights reserved. E.&O.E. January 2016.

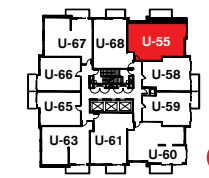
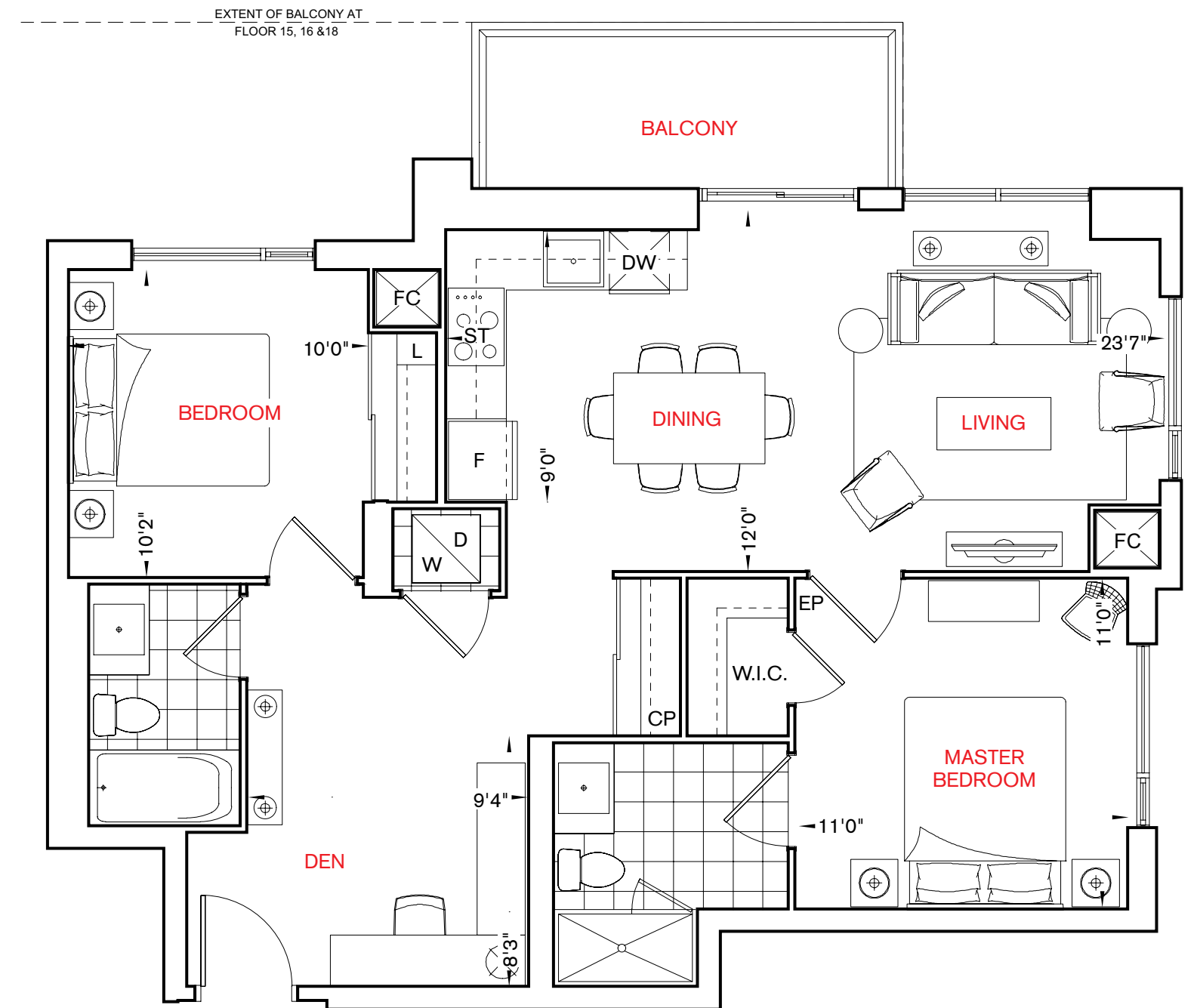
Succulent Open Den!



Custard

2D + D

2 bedroom + den



TYPICAL FLOOR

All dimensions are approximate and subject to normal construction variances. Dimensions may exceed the useable floor area. Sizes and specifications subject to change without notice. Furniture is displayed for illustration purposes only and does not necessarily reflect the electrical plan for the suite. Suites are sold unfurnished. ©Tridel 2016. ©Tridel and design. "D" design, Tridel Built for Life and design, Built Green. Built for Life and design are registered Trademarks of Tridel Corporation. Project names and logos are Trademarks of their respective owners. All rights reserved. E.&O.E. January 2016.

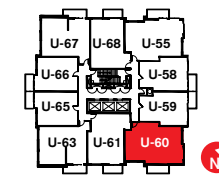
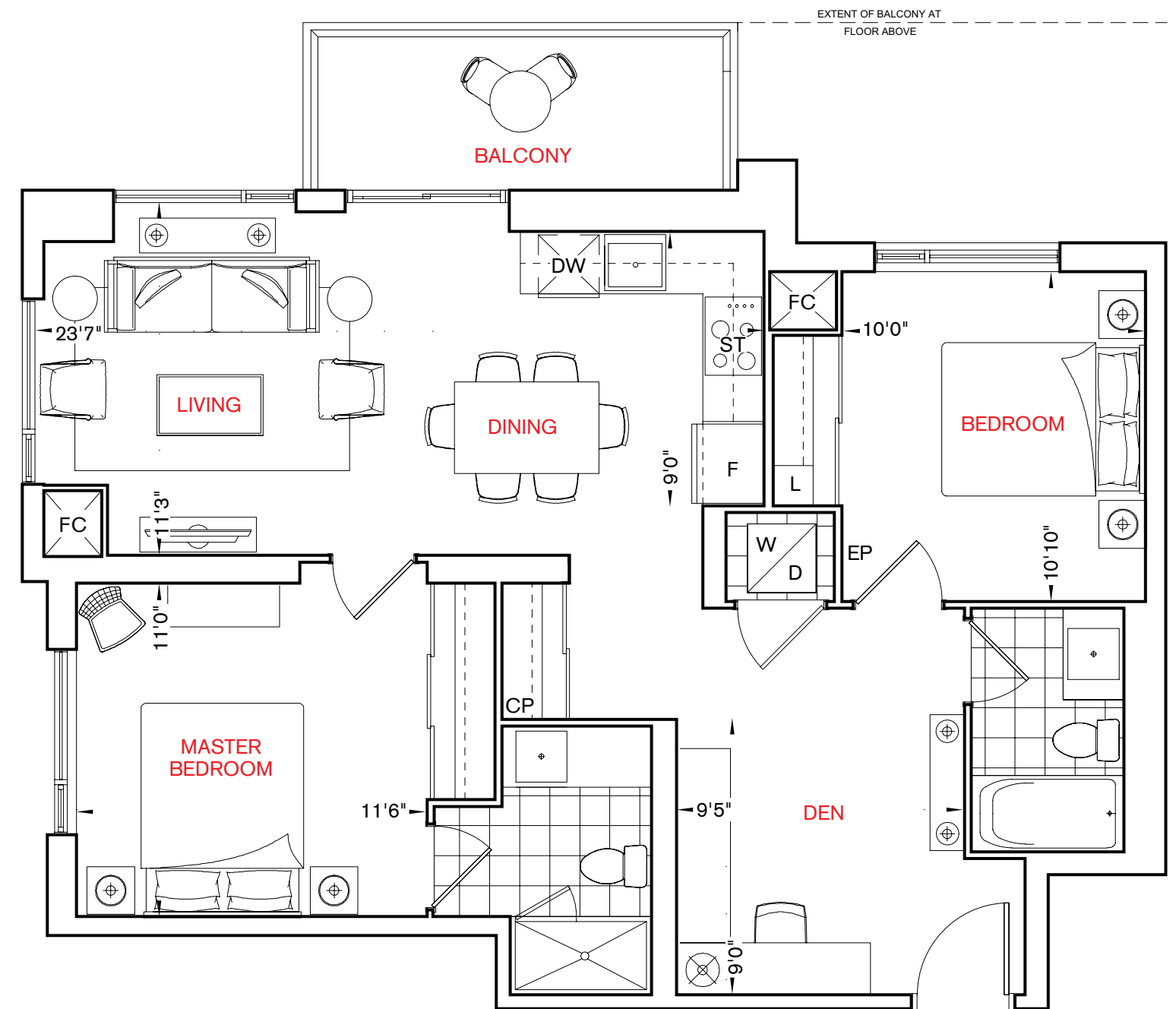
Deliciously
Open Layout!



Blueberry

2E + D

2 bedroom + den



TYPICAL FLOOR

All dimensions are approximate and subject to normal construction variances. Dimensions may exceed the useable floor area. Sizes and specifications subject to change without notice. Furniture is displayed for illustration purposes only and does not necessarily reflect the electrical plan for the suite. Suites are sold unfurnished. ©Tridel 2016. ©Tridel and design, "D" design, Tridel Built for Life and design, Built Green. Built for Life and design are registered Trademarks of Tridel Corporation. Project names and logos are Trademarks of their respective owners. All rights reserved. E.&O.E. January 2016.

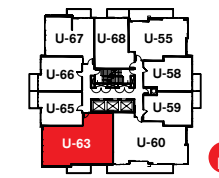
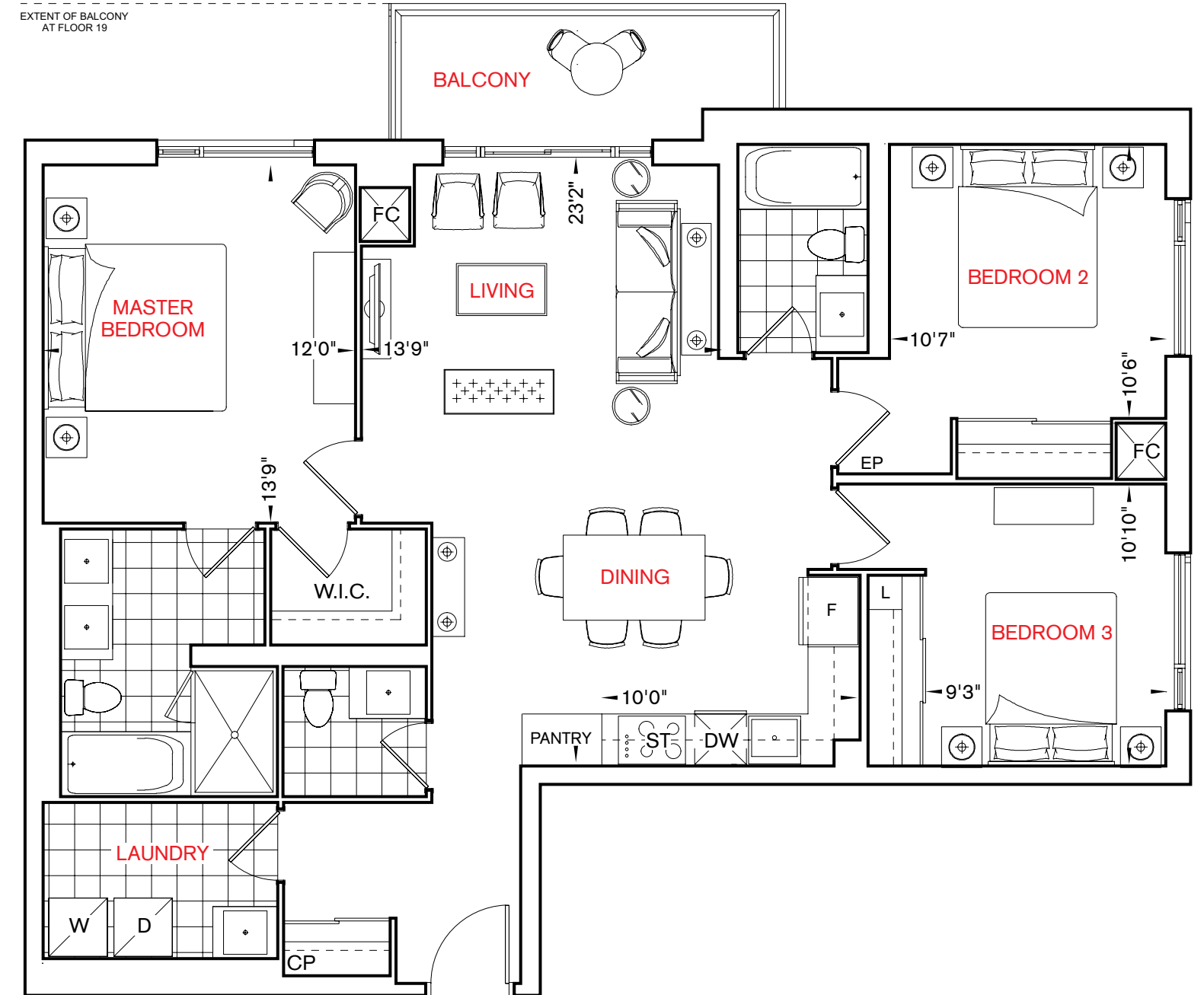
Powder Room
Perfection!



Cookies and Cream

3A

3 bedroom



FLOOR 18

All dimensions are approximate and subject to normal construction variances. Dimensions may exceed the useable floor area. Sizes and specifications subject to change without notice. Furniture is displayed for illustration purposes only and does not necessarily reflect the electrical plan for the suite. Suites are sold unfurnished. ©Tridel 2016. Tridel and design, "D" design, Tridel Built for Life and design, Built Green. Built for Life and design are registered Trademarks of Tridel Corporation. Project names and logos are Trademarks of their respective owners. All rights reserved. E.&O.E. January 2016.

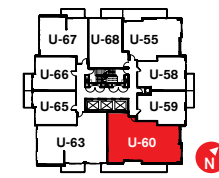
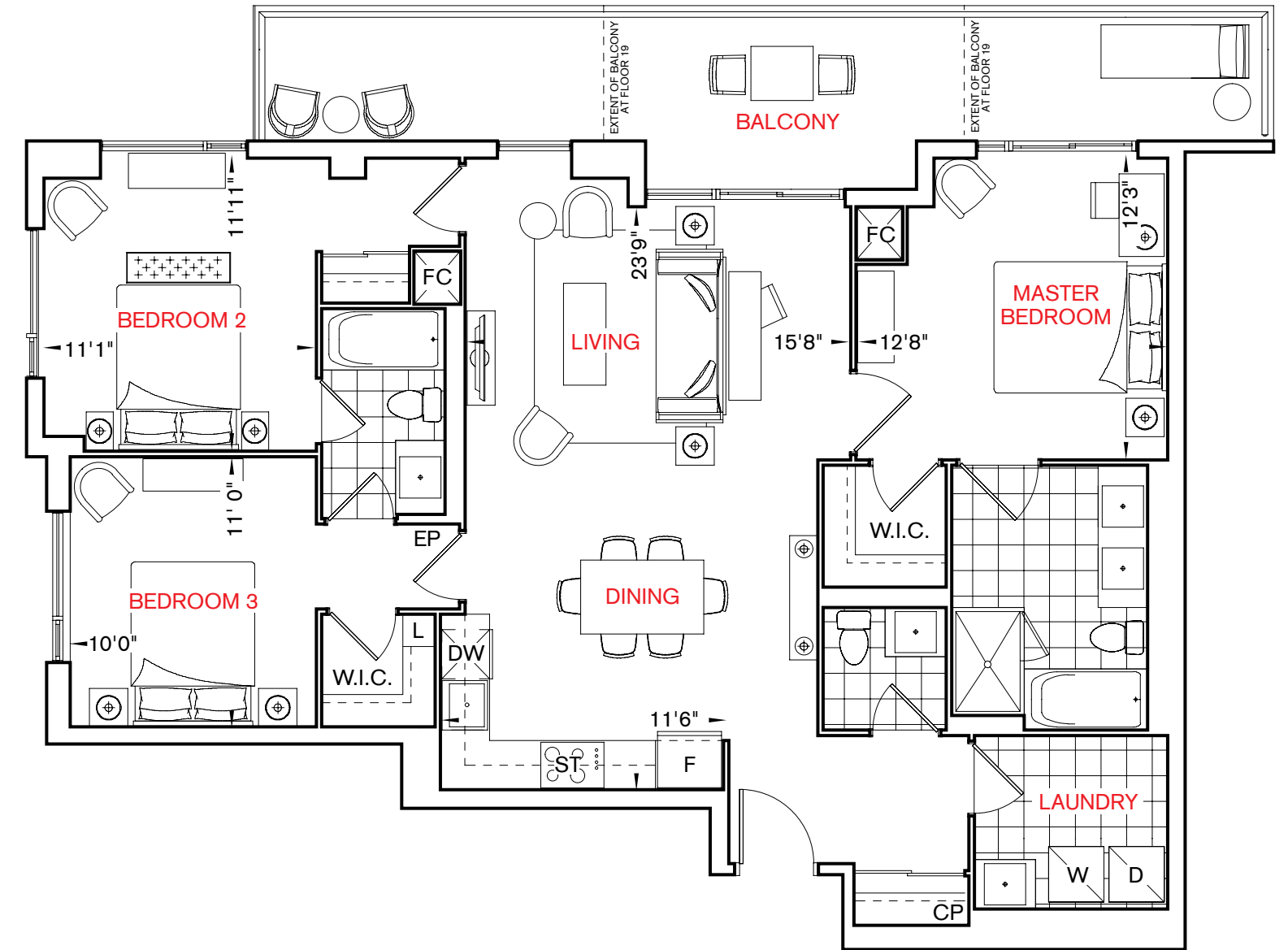
Spectacularly
Spacious!



Strawberry

3B

3 bedroom



FLOOR 18

All dimensions are approximate and subject to normal construction variances. Dimensions may exceed the useable floor area. Sizes and specifications subject to change without notice. Furniture is displayed for illustration purposes only and does not necessarily reflect the electrical plan for the suite. Suites are sold unfurnished. ©Tridel 2016. ©Tridel and design, "D" design, Tridel Built for Life and design, Built Green. Built for Life and design are registered Trademarks of Tridel Corporation. Project names and logos are Trademarks of their respective owners. All rights reserved. E.&O.E. January 2016.

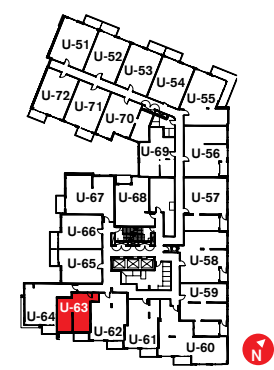
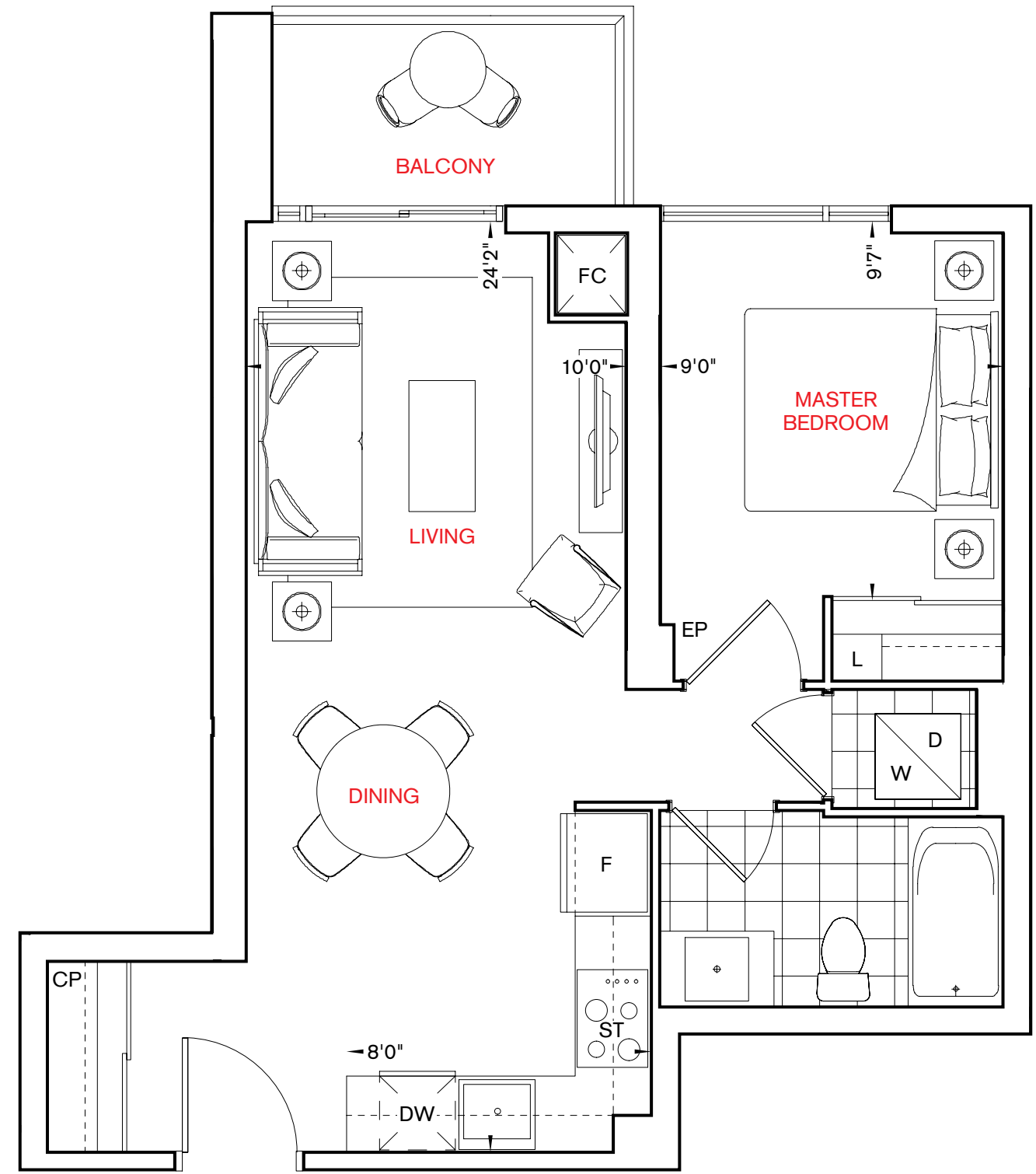
Sweet Suite!



Coconut

1A

1 bedroom



LOWER TYPICAL FLOOR

All dimensions are approximate and subject to normal construction variances. Dimensions may exceed the useable floor area. Sizes and specifications subject to change without notice. Furniture is displayed for illustration purposes only and does not necessarily reflect the electrical plan for the suite. Suites are sold unfurnished. ©Tridel 2016. ©Tridel and design, "D" design, Tridel Built for Life and design, Built Green. Built for Life and design are registered Trademarks of Tridel Corporation. Project names and logos are Trademarks of their respective owners. All rights reserved. E.&O.E. January 2016.

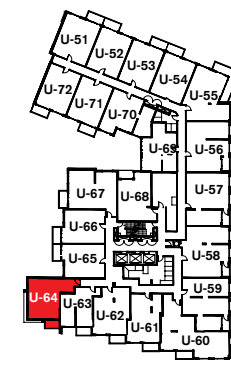
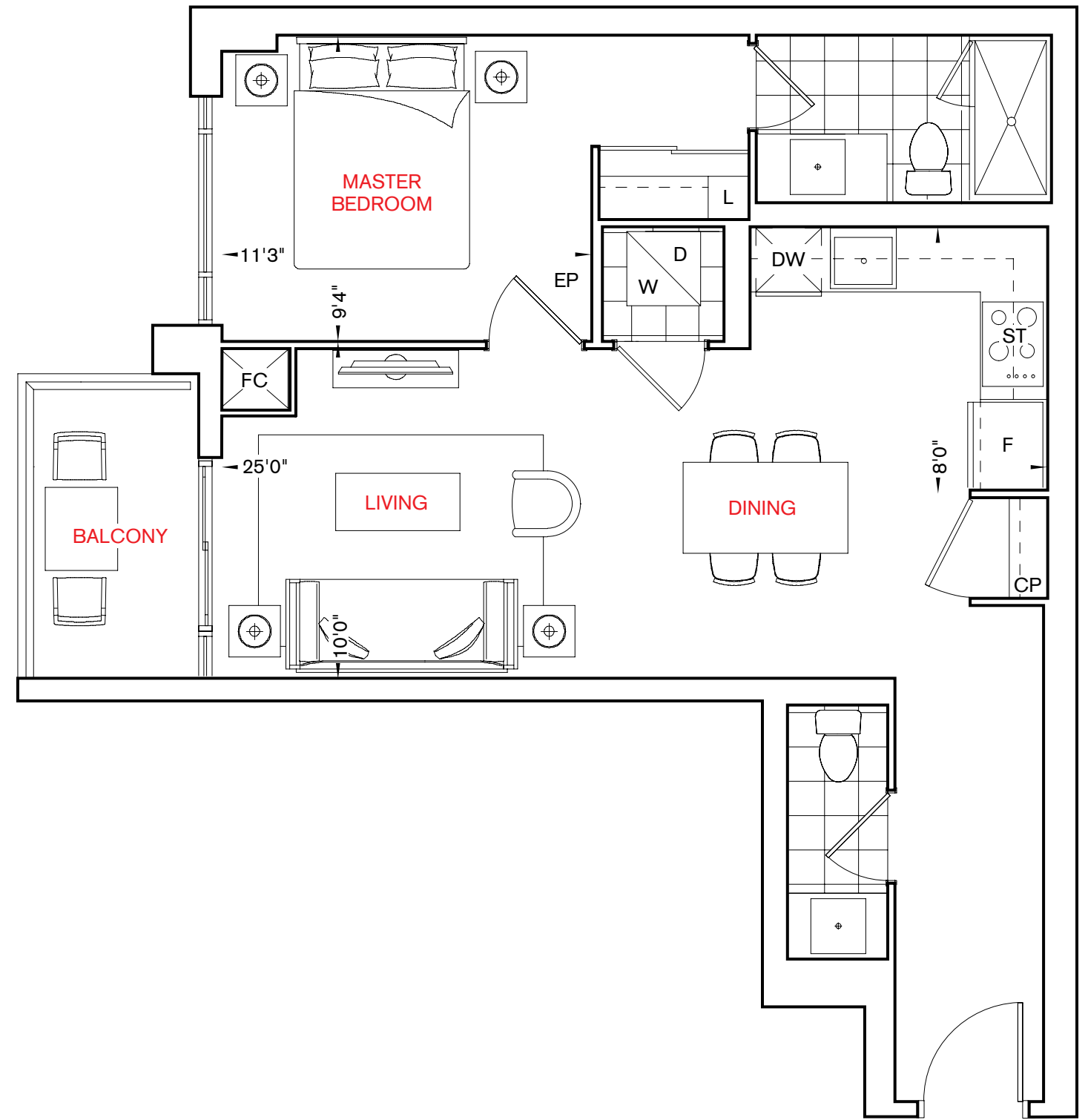
Majestic
Master Suite!



Peanut Butter

1B

1 bedroom



LOWER TYPICAL FLOOR

All dimensions are approximate and subject to normal construction variances. Dimensions may exceed the useable floor area. Sizes and specifications subject to change without notice. Furniture is displayed for illustration purposes only and does not necessarily reflect the electrical plan for the suite. Suites are sold unfurnished. ©Tridel 2016. ®Tridel and design, "D" design, Tridel Built for Life and design, Built Green. Built for Life and design are registered Trademarks of Tridel Corporation. Project names and logos are Trademarks of their respective owners. All rights reserved. E.&O.E. January 2016.

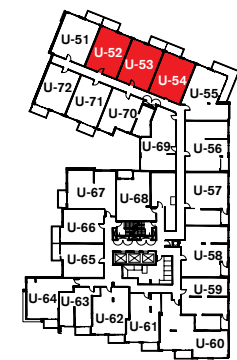
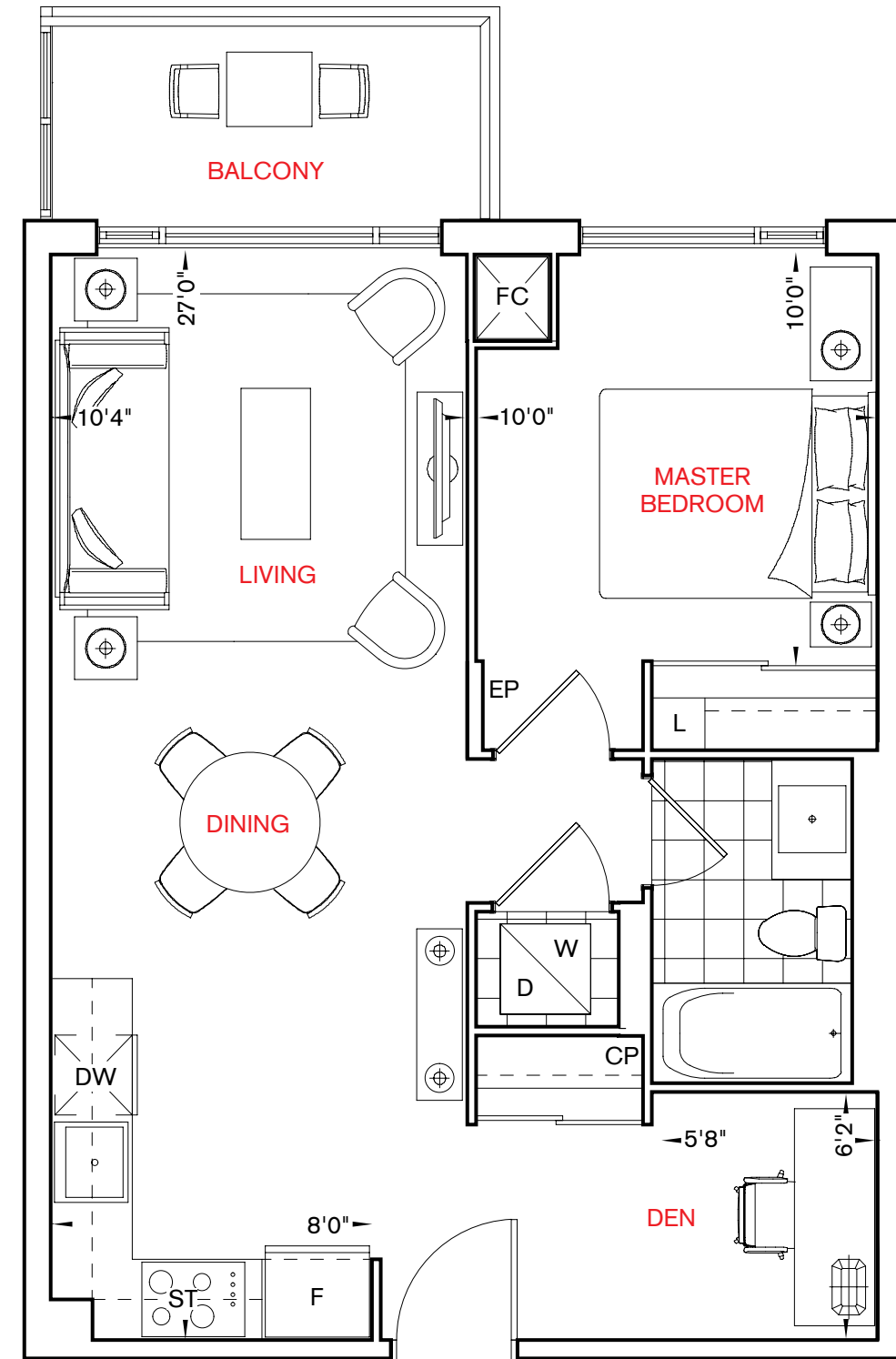
Delicious Open Flow!



Butter Pecan

1G + D / 1G + DR

1 bedroom + den



LOWER TYPICAL FLOOR

All dimensions are approximate and subject to normal construction variances. Dimensions may exceed the useable floor area. Sizes and specifications subject to change without notice. Furniture is displayed for illustration purposes only and does not necessarily reflect the electrical plan for the suite. Suites are sold unfurnished. ©Tridel 2016. ©Tridel and design, "D" design, Tridel Built for Life and design, Built Green. Built for Life and design are registered Trademarks of Tridel Corporation. Project names and logos are Trademarks of their respective owners. All rights reserved. E.&O.E. January 2016.

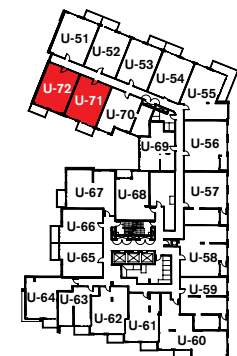
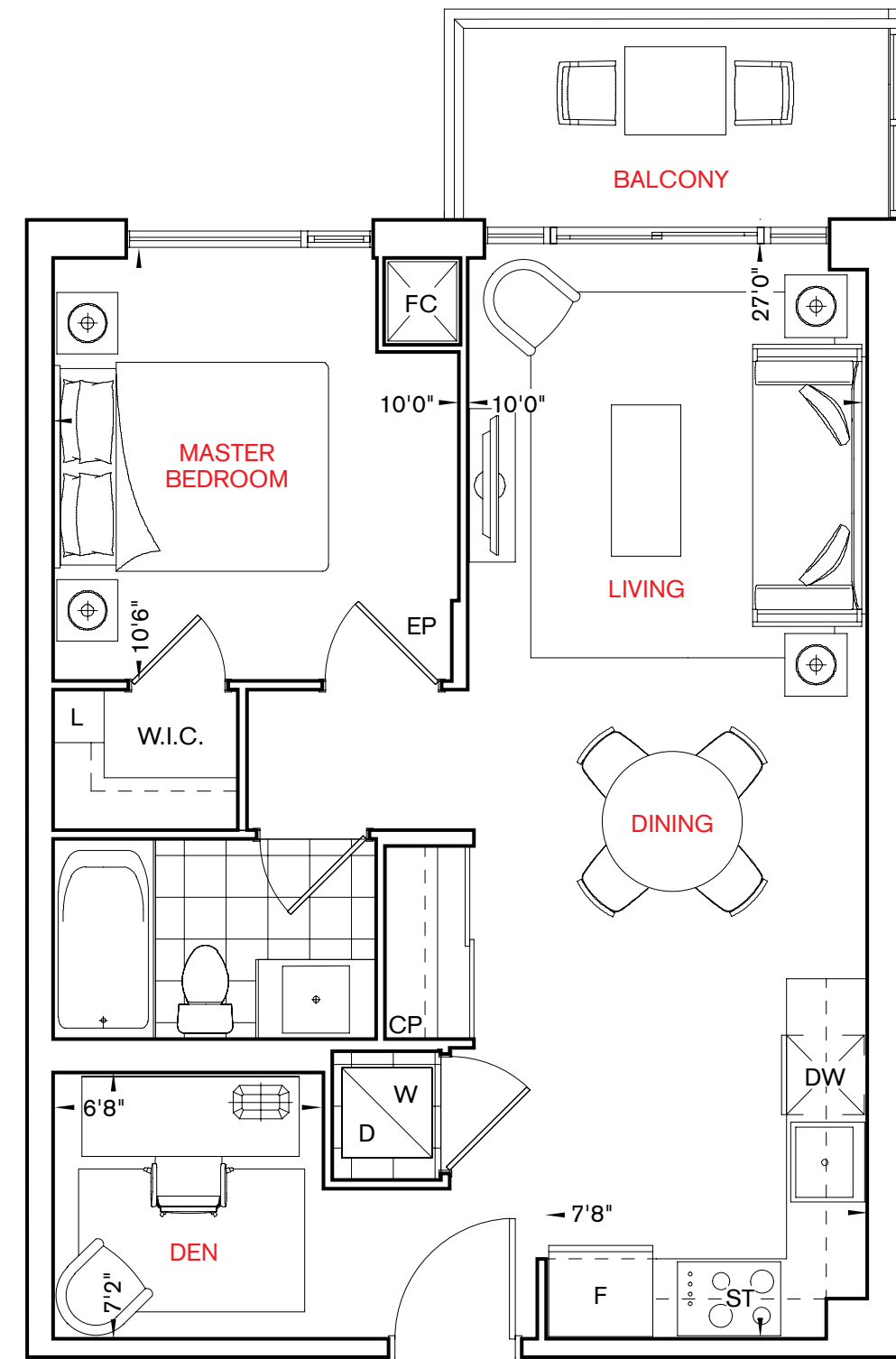
Delectable
Walk-in Closet!



Banana Split

1H + D / 1H + DR

1 bedroom + den



LOWER TYPICAL FLOOR

All dimensions are approximate and subject to normal construction variances. Dimensions may exceed the useable floor area. Sizes and specifications subject to change without notice. Furniture is displayed for illustration purposes only and does not necessarily reflect the electrical plan for the suite. Suites are sold unfurnished. ©Tridel 2016. ®Tridel and design, "D" design, Tridel Built for Life and design, Built Green. Built for Life and design are registered Trademarks of Tridel Corporation. Project names and logos are Trademarks of their respective owners. All rights reserved. E.&O.E. January 2016.

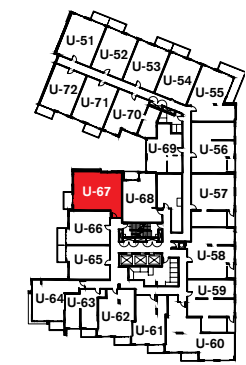
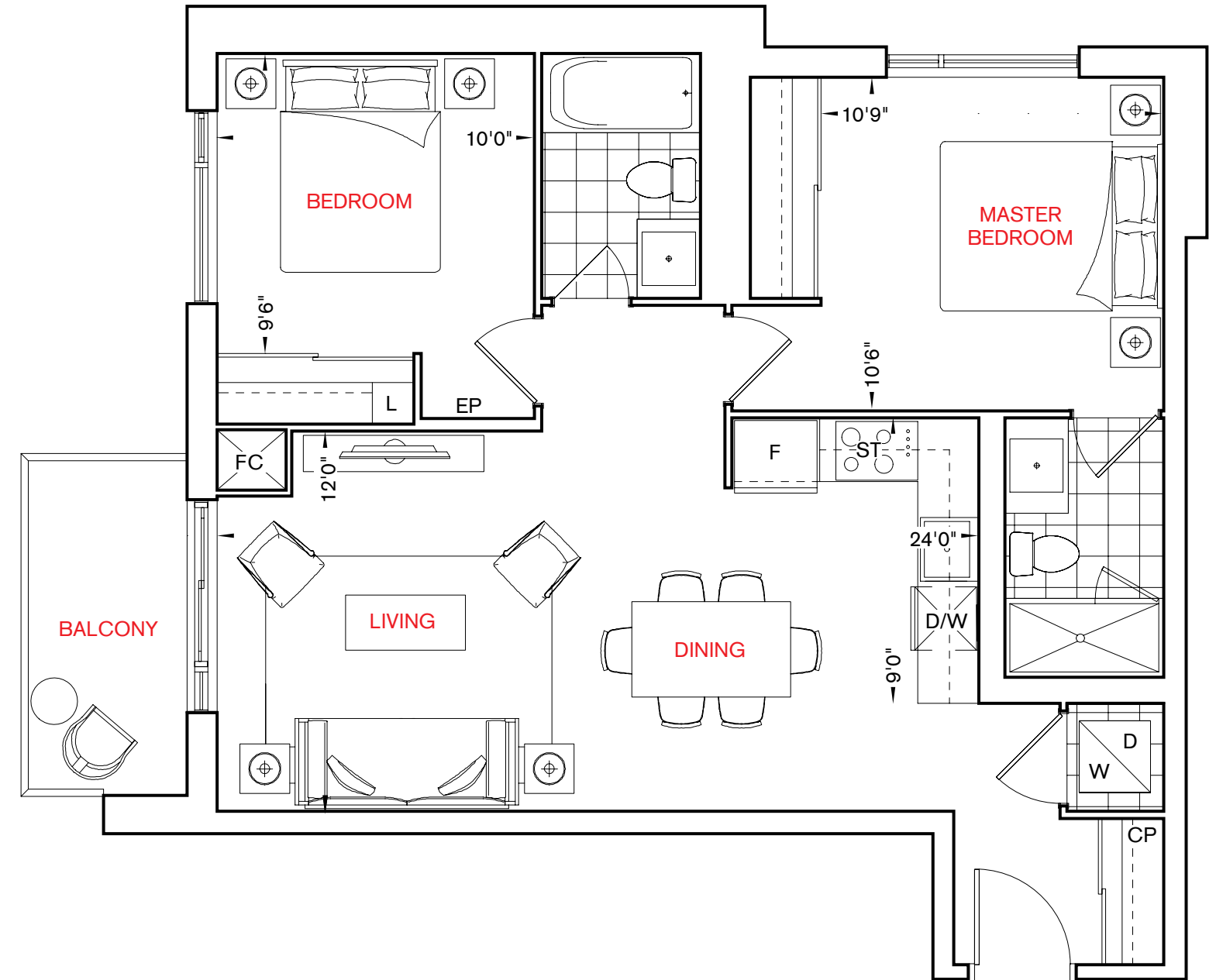
Generous Living
and Dining!



Maple Fudge

2N

2 bedroom



TYPICAL FLOOR

All dimensions are approximate and subject to normal construction variances. Dimensions may exceed the useable floor area. Sizes and specifications subject to change without notice. Furniture is displayed for illustration purposes only and does not necessarily reflect the electrical plan for the suite. Suites are sold unfurnished. ©Tridel 2016. ©Tridel and design, "D" design, Tridel Built for Life and design, Built Green. Built for Life and design are registered Trademarks of Tridel Corporation. Project names and logos are Trademarks of their respective owners. All rights reserved. E.&O.E. January 2016.

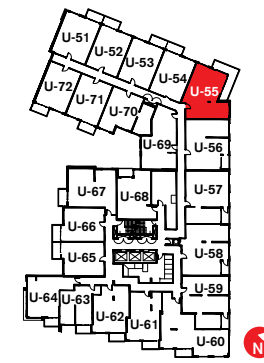
Deliciously
Spread Out!



Praline

2F

2 bedroom



LOWER TYPICAL FLOOR

All dimensions are approximate and subject to normal construction variances. Dimensions may exceed the useable floor area. Sizes and specifications subject to change without notice. Furniture is displayed for illustration purposes only and does not necessarily reflect the electrical plan for the suite. Suites are sold unfurnished. ©Tridel 2016. "D" design, Tridel Built for Life and design, Built Green. Built for Life and design are registered Trademarks of Tridel Corporation. Project names and logos are Trademarks of their respective owners. All rights reserved. E.&O.E. January 2016.

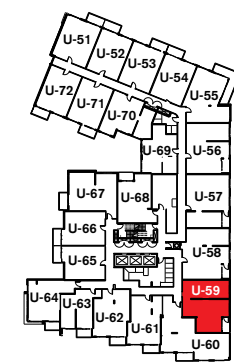
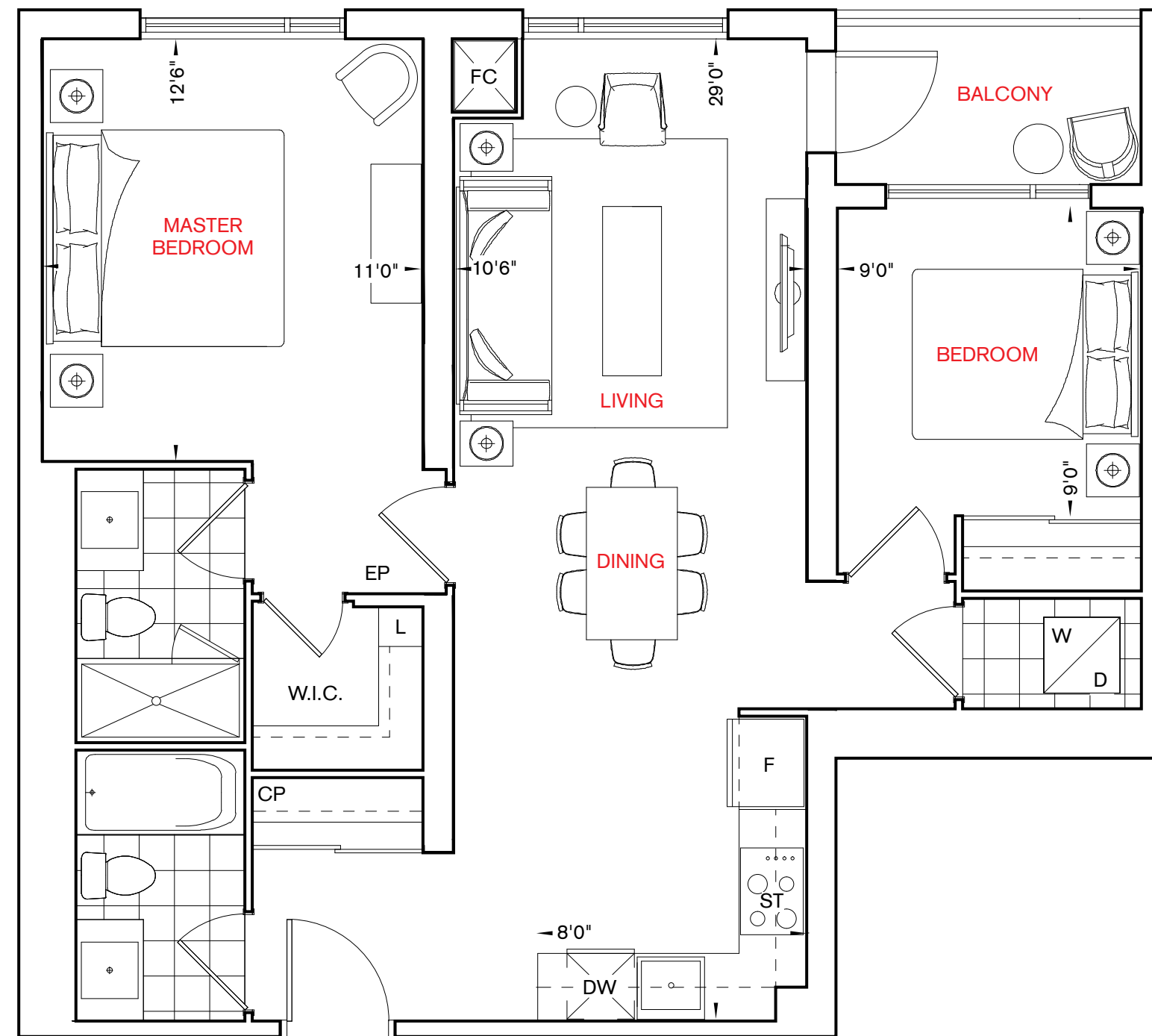
Scrumptious Storage!



Cherry

2G

2 bedroom



LOWER TYPICAL FLOOR

All dimensions are approximate and subject to normal construction variances. Dimensions may exceed the useable floor area. Sizes and specifications subject to change without notice. Furniture is displayed for illustration purposes only and does not necessarily reflect the electrical plan for the suite. Suites are sold unfurnished. ©Tridel 2016. ©Tridel and design, "D" design, Tridel Built for Life and design, Built Green. Built for Life and design are registered Trademarks of Tridel Corporation. Project names and logos are Trademarks of their respective owners. All rights reserved. E.&O.E. January 2016.

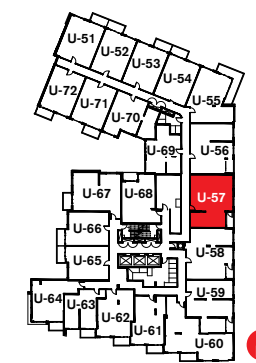
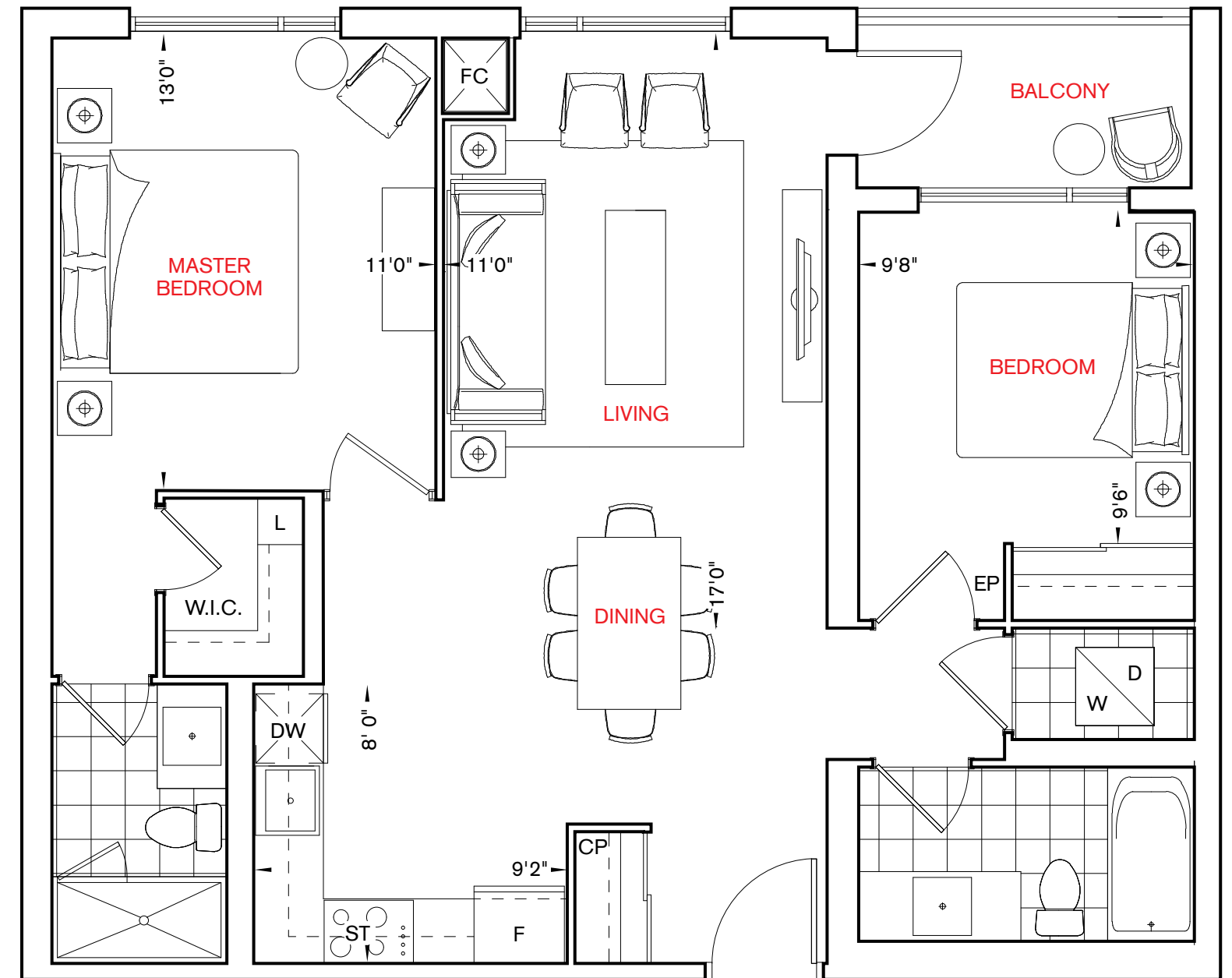
Spacious
Master Suite!



Pineapple

2H

2 bedroom



LOWER TYPICAL FLOOR

All dimensions are approximate and subject to normal construction variances. Dimensions may exceed the useable floor area. Sizes and specifications subject to change without notice. Furniture is displayed for illustration purposes only and does not necessarily reflect the electrical plan for the suite. Suites are sold unfurnished. ©Tridel 2016. ©Tridel and design, "D" design, Tridel Built for Life and design, Built Green. Built for Life and design are registered Trademarks of Tridel Corporation. Project names and logos are Trademarks of their respective owners. All rights reserved. E.&O.E. January 2016.

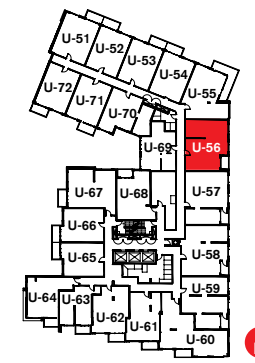
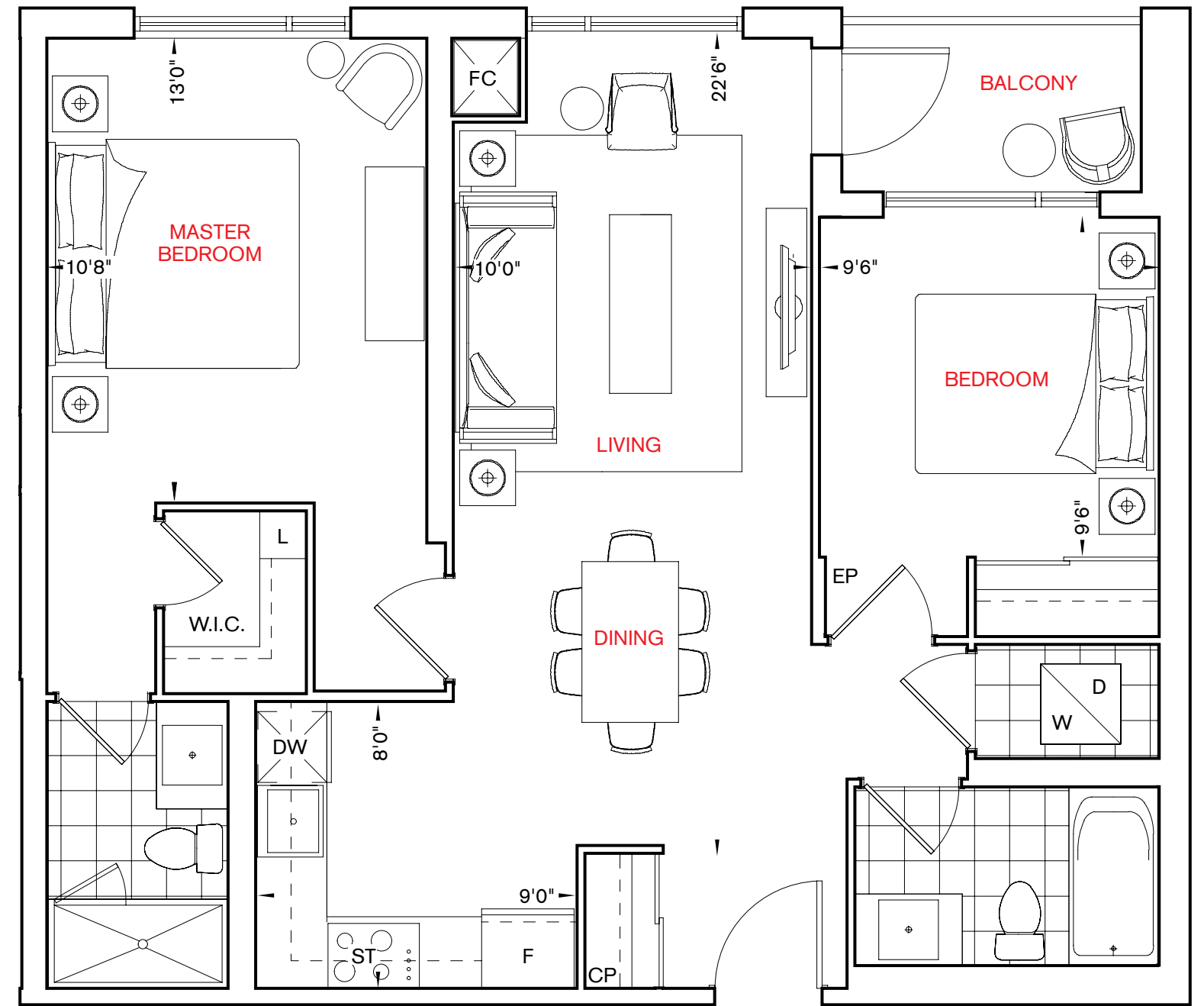
Picture Perfect!



Gumdrop

2K

2 bedroom



LOWER TYPICAL FLOOR

All dimensions are approximate and subject to normal construction variances. Dimensions may exceed the useable floor area. Sizes and specifications subject to change without notice. Furniture is displayed for illustration purposes only and does not necessarily reflect the electrical plan for the suite. Suites are sold unfurnished. ©Tridel 2016. @Tridel and design, "D" design, Tridel Built for Life and design, Built Green. Built for Life and design are registered Trademarks of Tridel Corporation. Project names and logos are Trademarks of their respective owners. All rights reserved. E.&O.E. January 2016.

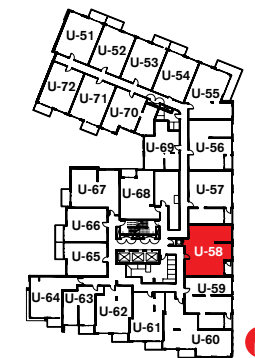
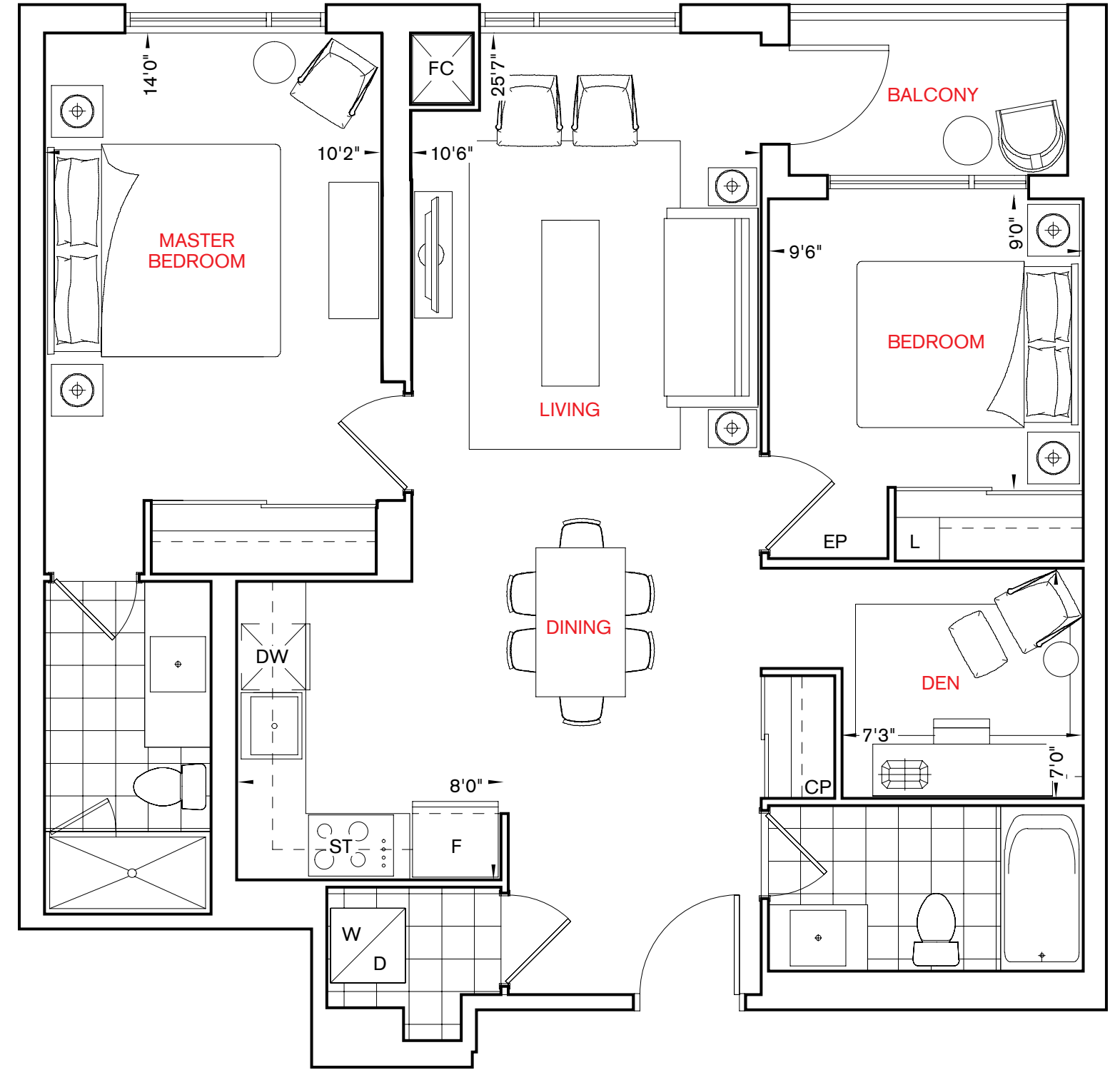
Private Den!



Chocolate Chip

2L + D

2 bedroom + den



LOWER TYPICAL FLOOR

All dimensions are approximate and subject to normal construction variances. Dimensions may exceed the useable floor area. Sizes and specifications subject to change without notice. Furniture is displayed for illustration purposes only and does not necessarily reflect the electrical plan for the suite. Suites are sold unfurnished. ©Tridel 2016. ©Tridel and design, "D" design, Tridel Built for Life and design, Built Green. Built for Life and design are registered Trademarks of Tridel Corporation. Project names and logos are Trademarks of their respective owners. All rights reserved. E.&O.E. January 2016.

TRIDEL[®]
BUILT FOR LIFE



Downtown Toronto, 1925
City of Toronto Archives

BUILT *on history.*

Eight decades of construction has taught us a thing or two about building condominiums. We weave our long and proud history of innovation and design into every Tridel home. With Canada's top designers, planners and construction experts at the helm, our storied history is your ultimate peace of mind.

CURRENT TRIDEL COMMUNITIES TO CALL HOME

TORONTO

Alter
Ten York
101 Erskine
Sherwood at Huntington
One Old Mill
Two Old Mill
Aqualina at Bayside
Aquavista at Bayside
SQ at Alexandra Park
SQ² at Alexandra Park

NORTH YORK

Scala
Trio at Atria
Alto & Parkside at Atria
Argento

ETOBICOKE

Bloorvista
Islington Terrace

SCARBOROUGH

Avani at Metrogate
Avani 2 at Metrogate

**EIGHT DECADES OF HOME BUILDING. OVER 80,000 HOMES BUILT.
TRIDEL COMMUNITIES ARE BUILT GREEN. BUILT FOR LIFE.®**

*Price and specifications are subject to change without notice. Illustrations are artist's concept only. Building and view not to scale. Tridel Built for Life®, Tridel Built Green, Built for Life.® are registered trademarks of Tridel and used under license. ©Tridel 2016. All rights reserved. E.&O.E. January 2016.

tridel.com

